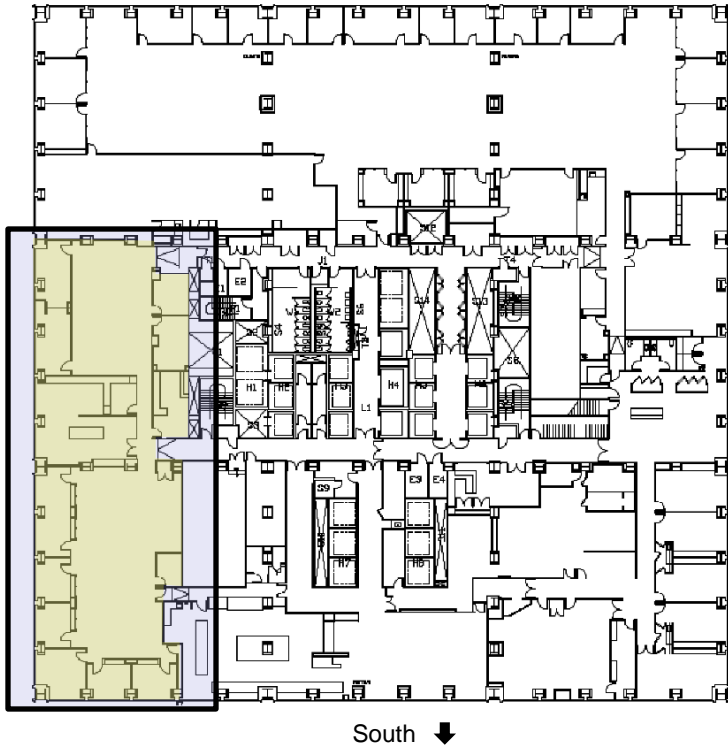


AVAILABLE: Below-Market “Plug & Play” Sublease

Willis Tower – Suite 4925

233 S. Wacker Dr., Chicago, IL 60606



PROPERTY SPECIFICATIONS

Suite Size:

8,263 SF – divisible / expandable

Floor / Views:

49th floor with West & South views

Private Offices:

6 executive window offices + 3 interior offices

Conference Rooms:

1 executive corner + 2 w/ windows

Furniture:

High-end mahogany built-in systems

Work-Stations:

Seventeen wooden fully-equipped

Other Areas Included:

Raised-floor comm center; open “trading” floor; mail room

Suite Access / Security:

Key card & keyed access

Internet Access:

T1 up to 100 Mbs in place

Sublease Rate:

\$19.50/SF Gross

Sublease Term:

Thru 2/27/11 – longer term possible

PROPERTY OVERVIEW

- One block from CTA lines & METRA Union Station
- Former Goldman Sachs space; high-end / fully furnished
- Plug-and-play space – **priced to move!**

OP2MIZE, LLC / 888-831-9595 / www.op2mize.com

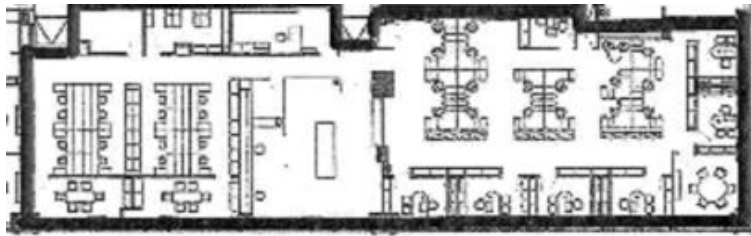
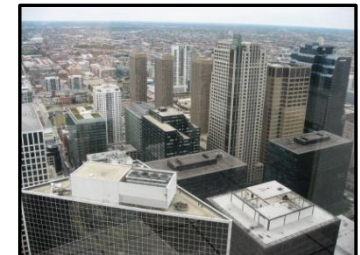
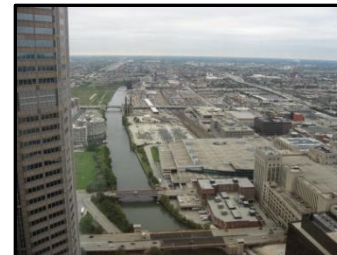
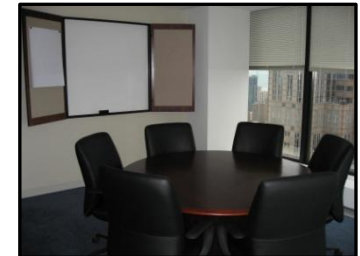
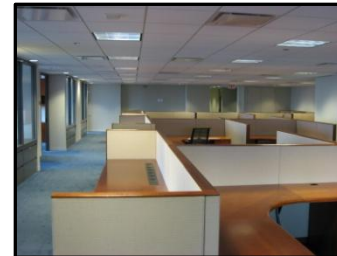
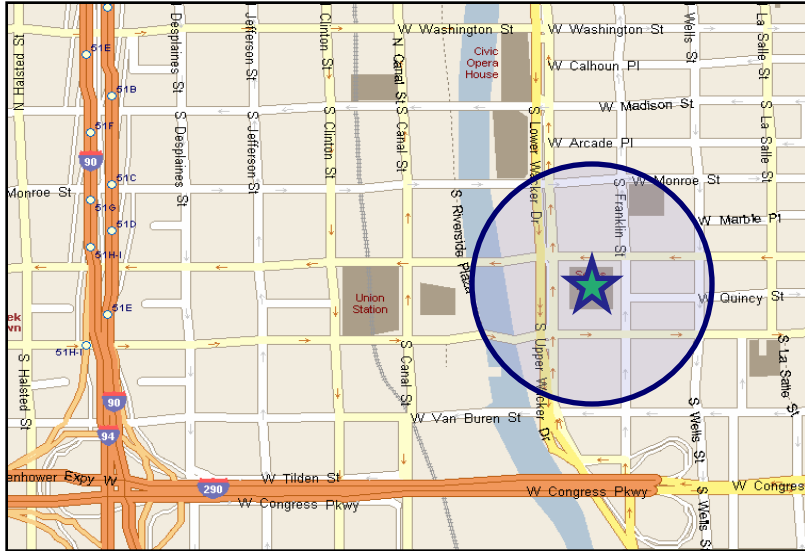
“Optimal Commercial Real Estate Strategies”

Op2mize
Sustainable Intelligence™

AVAILABLE: 8,263 SF

Willis Tower – Suite 4925

233 S. Wacker Dr., Chicago, IL 60606



Furnished Floor Plan / West view ↓

**For More Information
Contact Exclusive Agent:**

Geoff Kasselmann, SIOR, LEED AP or Daniel Dakhil

gkasselmann@op2mize.com

danieldakhil@op2mize.com

888.831.9595

OP2MIZE, LLC / 888-831-9595 / www.op2mize.com

"Optimal Commercial Real Estate Strategies"

Op2mize
Sustainable Intelligence™

All information is from sources deemed reliable but is subject to errors, omissions, changes, prior transactions, other conditions, or withdrawal without notice. No representation/warranty is made as to the environmental condition of this property, or those adjacent to it.