

PRIME I-55 ALL PURPOSE INDUSTRIAL BUILDING
AVAILABLE for LEASE

405 Heathrow Court, Burr Ridge, IL 60527

Available Space:	15,267 SF+/-
Total Building Size:	45,000 SF
Office Area:	6,800 SF +/-
Stories:	Single Story
Unit Dimensions:	165'D x 92'W
County:	DuPage
Facility Type:	Warehouse – Manufacturing – Distribution Facility
Year Built:	1980
Column Spacing:	34' x 44'
Ceiling Clear Height:	22'
Loading:	One (1) Exterior Dock, one (1) Drive-In Door
Sprinkler:	Wet System
Lighting:	Fluorescent
Power:	200 AMP electrical service
Water / Sewer:	City
Parking:	TBD
HVAC:	Direct Fire Gas Units
Zoning:	City of Burr Ridge I-1
Rail:	None
Lease Rate:	\$7.75 / SF Gross
Offered / Possession:	For Lease Only / Immediate
Comments:	<ul style="list-style-type: none">• East access to I-55, I-294 and I-355• Located between two 4-way Interchanges (County Line Rd and Rt. 83, Kingery Highway)• Low DuPage County Real Estate Taxes• I-55 Frontage• Business Park Setting• Atrium Entryways• Skylights Located Throughout Warehouse

CONTACT: Rich Antczak, RECS 630-747-5282 or Daniel Dakhil 312-237-1029
info@op2mize.com / www.op2mize.com

Op2mize
Sustainable Intelligence™

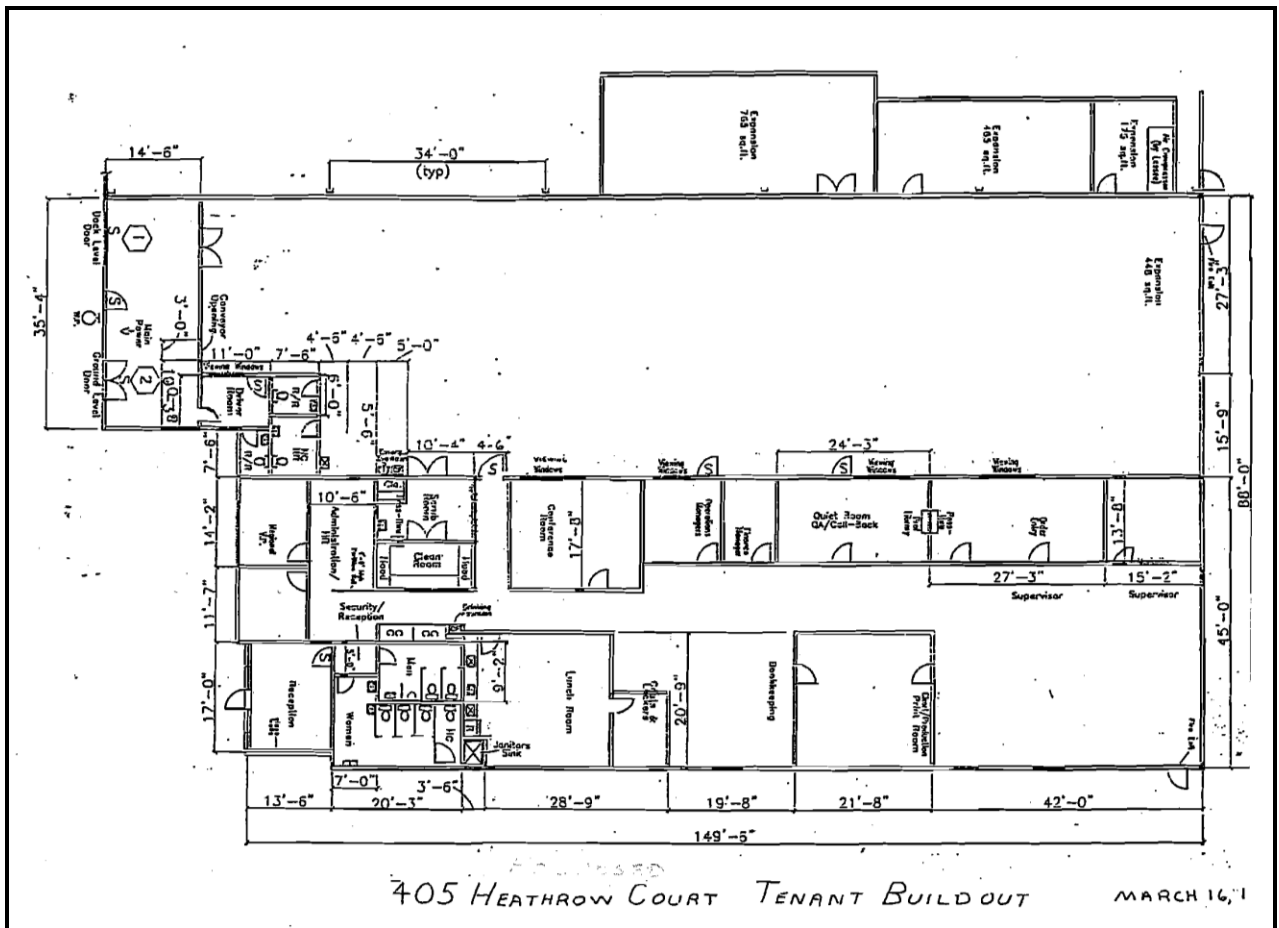
“Optimal Commercial Real Estate Strategies”

All information is from sources deemed reliable but is subject to errors, omissions, changes, prior transactions, other conditions, or withdrawal without notice. No representation/warranty is made as to the environmental condition of this property, nor those adjacent to it.

AVAILABLE: All-Purpose Industrial Space

Burr Ridge Industrial Park

405 Heathrow Court, Burr Ridge, IL 60527



For More Information
Contact Exclusive Agent:

Rich Antczak, RECS
rich@op2mize.com

Daniel Dakhil
dan@op2mize.com

630-747-5282

OP2MIZE, LLC / www.op2mize.com / 888-831-9595

"Optimal Commercial Real Estate Strategies"

Op2mize
Sustainable Intelligence™